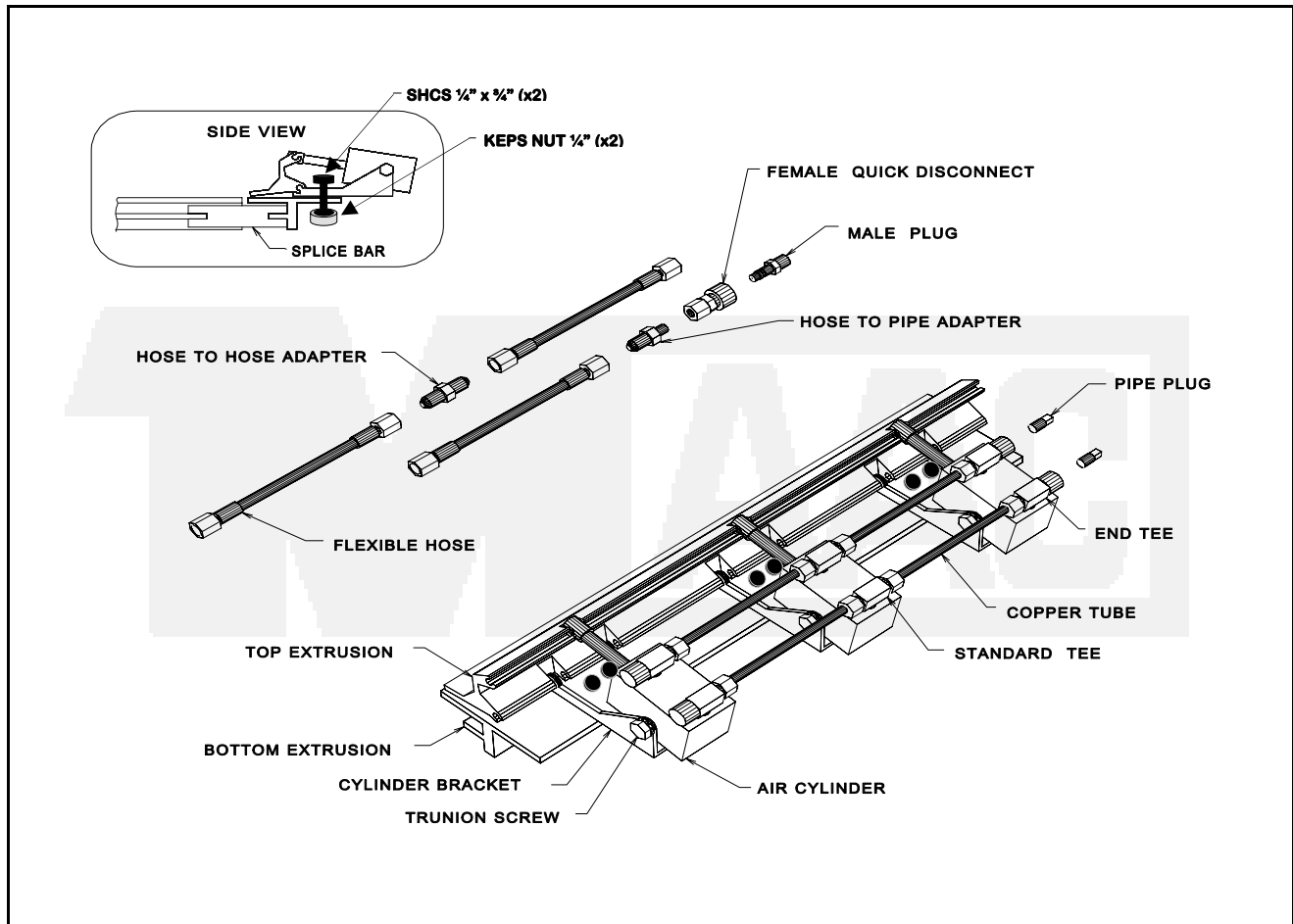


STANDARD CLAMP FRAME



Air Cylinder	10-0100-010	Male Plug Fitting	35-0300-060
Air Cylinder Vertical	10-0100-020	Cylinder Bracket	40-0200-010
CF Cyl. O-Ring Kit (New)	10-0600-050	Cylinder Bracket (Vertical)	40-0200-020
SHCS 1/4" x 3/4"	35-0200-020	Splice Bar 6"	40-1100-010
SHCS 1/4" x 1 1/4"	35-0200-040	Trunion Screw	40-1300-010
KEPS Nut 1/4"	35-0200-060	Top Extrusion Milled	45-0100-010
SHSS 5/16" x 3/4"	35-0200-080	Top Extrusion	45-0100-010
SHSS 5/16" x 1"	35-0200-100	Bottom Extrusion Milled	45-0100-020
Lock Washer (X) 5/16"	35-0200-120	Bottom Extrusion	45-0100-020
Jam Nut 5/16"	35-0200-140	Alum Angle 1/4 x 1 1/4 x 1 1/4	45-0100-025
Hose to Pipe Adapter	35-0300-010	Alum Channel C3x1.75	45-0100-040
Hose to Hose Adapter	35-0300-020	Steel Rod Round 1/4"	45-1200-010
Standard Branch Tee	35-0300-030	Pipe Plug 1/8"	60-0600-010
Standard End Tee	35-0300-040	Braided Hose 24"	65-0400-010
Female Quick Disconnect	35-0300-050	Braided Hose 48"	65-0400-031
Male Quick Disconnect	35-0300-055	Copper Tubing	65-1100-010